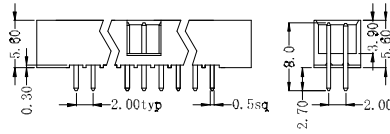
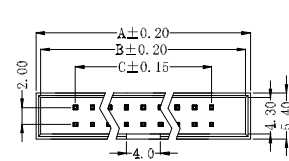
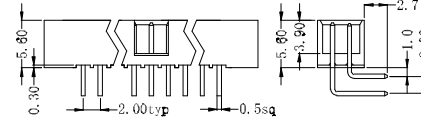
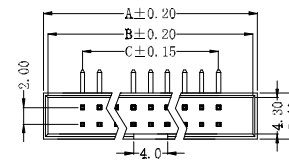


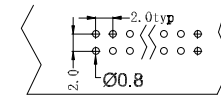
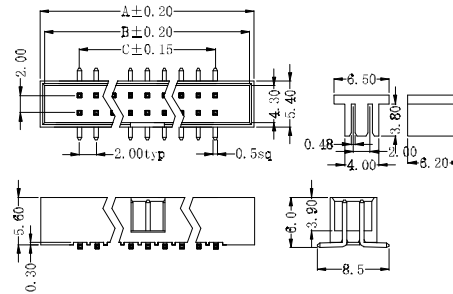
Straight Type



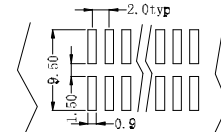
Right Angle Type



Surface Mount Type



P.C.B Layout



P.C.B Layout

材质 Material:

绝缘体 Insulator: Glass filled PBT UL94V-0, Black
 接触件 Contacts: Brass
 电镀层 Plating: Whole Gold plated over Nickel

电气性能 Electrical Characteristics:

接触电阻 Contact Resistance: 20mΩmax. at DC 100mA
 绝缘电阻 Insulator Resistance: 1000MΩmin. at 500V DC
 耐压 Withstanding Voltage: 1000V AC/rms 50Hz For 1 minute
 工作电流 Current Rating: 1.5 AMP

使用温度范围 Operating Temperature: -40°C ~ +105°C

Dimension

position	A	B	C	position	A	B	C
08	15.20	14.00	6.00	26	33.20	32.00	24.00
10	17.20	16.00	8.00	30	37.20	36.00	28.00
14	21.20	20.00	12.00	34	41.20	40.00	32.00
16	23.20	22.00	14.00	40	47.20	46.00	38.00
20	27.20	26.00	18.00	44	51.20	50.00	42.00
24	31.20	30.00	22.00	50	57.20	56.00	48.00

			TITLE BOX HEADER 2.00mm (0.079")		GENERAL TOLERANCE x.: ±0.3 x.x: ±0.2 x.xx: ±0.1		DRAWN BY		DATE		CHIZON(CI XI) ELECTRONIC CO.,LTD. 啓宸(慈溪)電子有限公司	
			2.0 DC3型筒牛插針				CHECKED BY 張國校		DATE			
			SERIES QC302		ANGLE TOLERANCE x.: ±2° x.x: ±1° x.xx: ±0.5°		APPROVED BY		DATE		DRAWING NO.	
			CUSTOMER P/N								SHEET 1 OF 1	
SCALE			DESCRIPTION		UNITS mm		PROJECTION		SHEET SIZE A4		REV. A0	