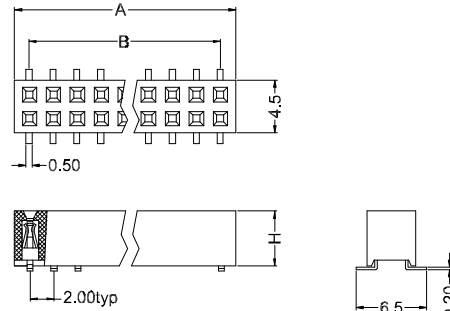
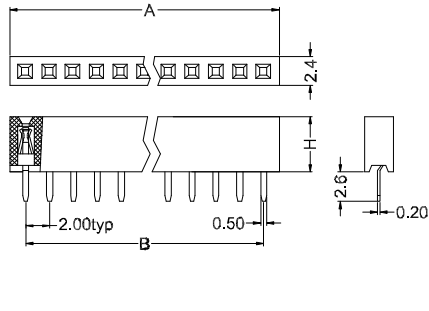


Single Row



材质 Material:

绝缘体 Insulator: Glass filled PBT UL94V-0 ,Black

接触件 Contacts: Phosphor Bronze

电镀层 Plating: Whole Gold plated over Nickel

电气性能 Electrical Characteristics:

接触电阻 Contact Resistance: 30mΩmax. at DC 100mA

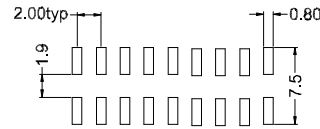
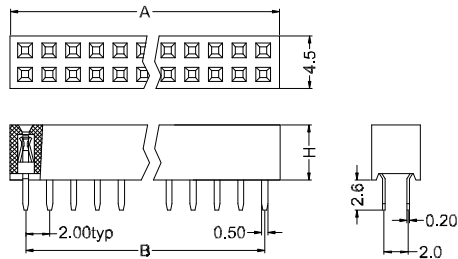
绝缘电阻 Insulator Resistance: 1000MΩmin. at 500V DC

耐压 Withstanding Voltage: 500V AC/rms 50Hz For 1 minute

工作电流 Current Rating: 1 AMP

使用温度范围 Operating Temperature: -40°C ~ +105°C

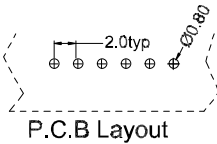
Dual Row



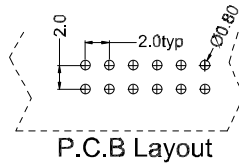
P.C.B Layout

Surface Mount Type

H: 4.3 / 4.6



P.C.B Layout



P.C.B Layout

| | |
|-----------|------------------------------|
| Position | 2 Thru 80 |
| Dimension | |
| A±0.20 | 2.00 X No.of Positions+0.4 |
| B±0.15 | 2.00 X No.of Positions -2.00 |

| | | | | | |
|--------------|--|--------------------------------------|-------------|------|---|
| TITLE | PCB SOCKET 2.00mm(0.079") 2.0单、双排母座 | GENERAL TOLERANCE | DRAWN BY | DATE | CHIZON (CI XI) ELECTRONIC CO.,LTD. 啓宸(慈溪)电子有限公司 |
| SERIES | QC514-1 & -2 | x. : ±0.3 x.x: ±0.2 x.xx: ±0.1 | CHECKED BY | DATE | |
| CUSTOMER P/N | | ANGLE TOLERANCE | G.x.zhang | | |
| UNITS | mm | x. : ±2° x.x: ±1° x.xx: ±0.5° | APPROVED BY | DATE | DRAWING NO. |
| SCALE | 1:1 | PROJECTION | | | SHEET 1 OF 1 |
| SCALE | DESCRIPTION | CHK | DATE | | SHEET SIZE A4 |
| | | | | | REV. A0 |