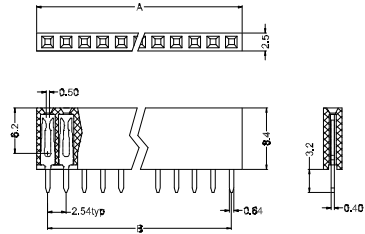
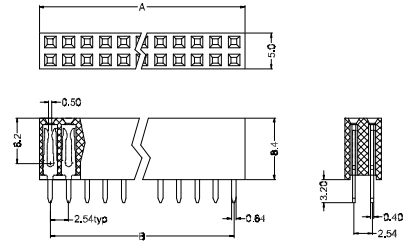


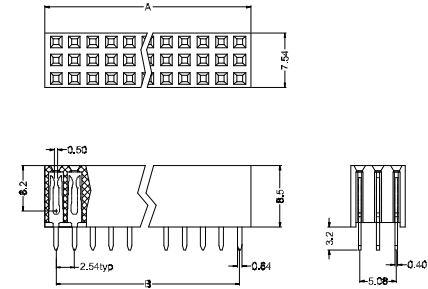
Straight Type



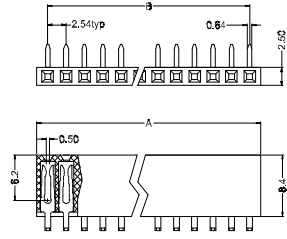
Straight Type



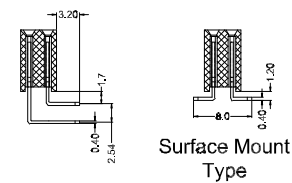
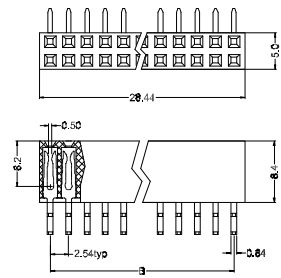
Straight Type



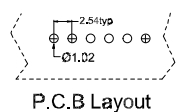
Right Angle Type



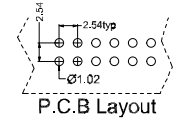
Right Angle Type



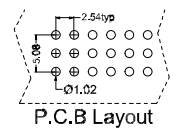
Surface Mount Type



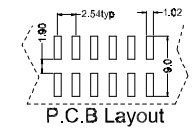
P.C.B Layout



P.C.B Layout



P.C.B Layout



P.C.B Layout

Position	2 Thru 80
Dimension	
A±0.20	2.54 X No.of Positions+0.5
B±0.15	2.54 X No.of Positions -2.54

材质 Material:
 绝缘体 Insulator: Glass filled PBT UL94V-0 ,Black
 接触件 Contacts: Brass
 电镀层 Plating: Whole Gold plated over Nickel
电气性能 Electrical Characteristics:
 接触电阻 Contact Resistance: 30mΩmax. at DC 100mA
 绝缘电阻 Insulator Resistance: 1000MΩmin. at 500V DC
 耐压 Withstanding Voltage: 1000V AC/rms 50Hz For 1 minute
 工作电流 Current Rating: 2 AMP
 使用温度范围 Operating Temperature: -55°C ~+105°C

				TITLE PCB SOCKET 2.54mm(0.100") 2.54单、双排母座		GENERAL TOLERANCE x. : ±0.3 x.x: ±0.2 x.xx: ±0.1		DRAWN BY wj.huang DATE 08.11.10		CHIZON CHIZON(CI XI) ELECTRONIC CO.,LTD.	
				SERIES QC511-1 & -2 & -3		ANGLE TOLERANCE x. : ±2° x.x: ±1° x.xx: ±0.5°		CHECKED BY G.x.zhang DATE		啓宸 (慈溪) 电子有限公司	
				CUSTOMER P/N		APPROVED BY DATE		DRAWING NO.		SHEET 1 OF 1	
SCALE				DESCRIPTION		UNITS mm		SHEET SIZE A4		REV. A0	
DATE				PROJECTION		SCALE 1:1					