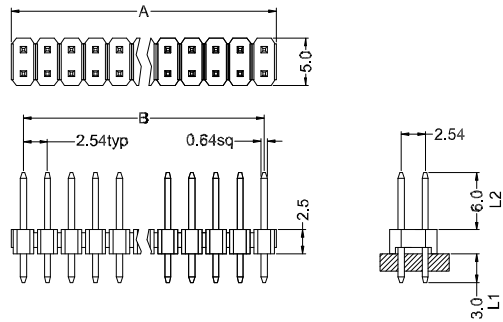
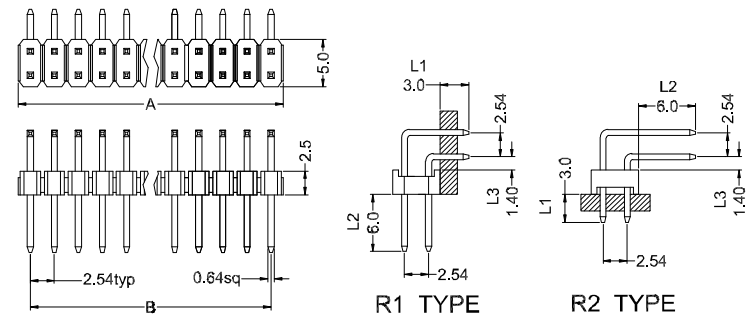


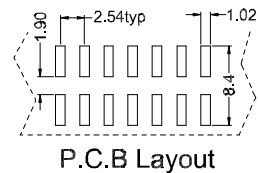
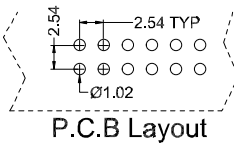
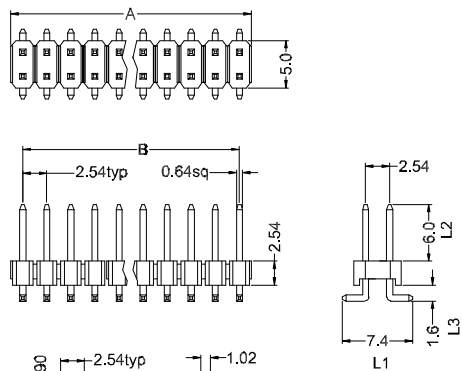
Straight Type



Right Angle Type



Surface Mount Type



| | |
|-----------|------------------------------|
| Position | 2 Thru 80 |
| Dimension | |
| A±0.20 | 2.54 X No.of Positions |
| B±0.15 | 2.54 X No.of Positions -2.54 |

材质 Material:

绝缘体 Insulator: Glass filled PBT UL94V-0 ,Black
 接触件 Contacts: Brass
 电镀层 Plating:Whole Gold plated over Nickel

电气性能 Electrical Characteristics:

接触电阻 Contact Resistance: 30mΩmax. at DC 100mA
 绝缘电阻 Insulator Resistance: 1000MΩmin. at 500V DC
 耐压 Withstanding Voltage: 1000V AC/rms 50Hz For 1 minute
 工作电流 Current Rating: 2 AMP

使用温度范围 Operating Temperature: -55°C~+105°C

| | | | | | | | | | | | | | | |
|-------|-------------|--|--|--------------|-------------------------------|-------|---|--|-------------|-------------|------------|--------------|---|----|
| | | | | TITLE | PIN HEADER 2.54mm 2.54双排插针 | | GENERAL TOLERANCE x. : ±0.3 x.x: ±0.2 x.xx: ±0.1 | | DRAWN BY | | DATE | | chizon CHIZON(CI XI) ELECTRONIC CO.,LTD. 啓宸(慈溪)电子有限公司 | |
| | | | | SERIES | QC501-2 | | ANGLE TOLERANCE x. : ±2° x.x: ±1° x.xx: ±0.5° | | CHECKED BY | | DATE | | | |
| | | | | CUSTOMER P/N | | | PROJECTION | | APPROVED BY | | DATE | | | |
| SCALE | DESCRIPTION | | | CHK | DATE | SCALE | 1:1 | | | DRAWING NO. | | SHEET 1 OF 1 | | |
| | | | | | | | | | | | SHEET SIZE | A4 | REV. | AO |