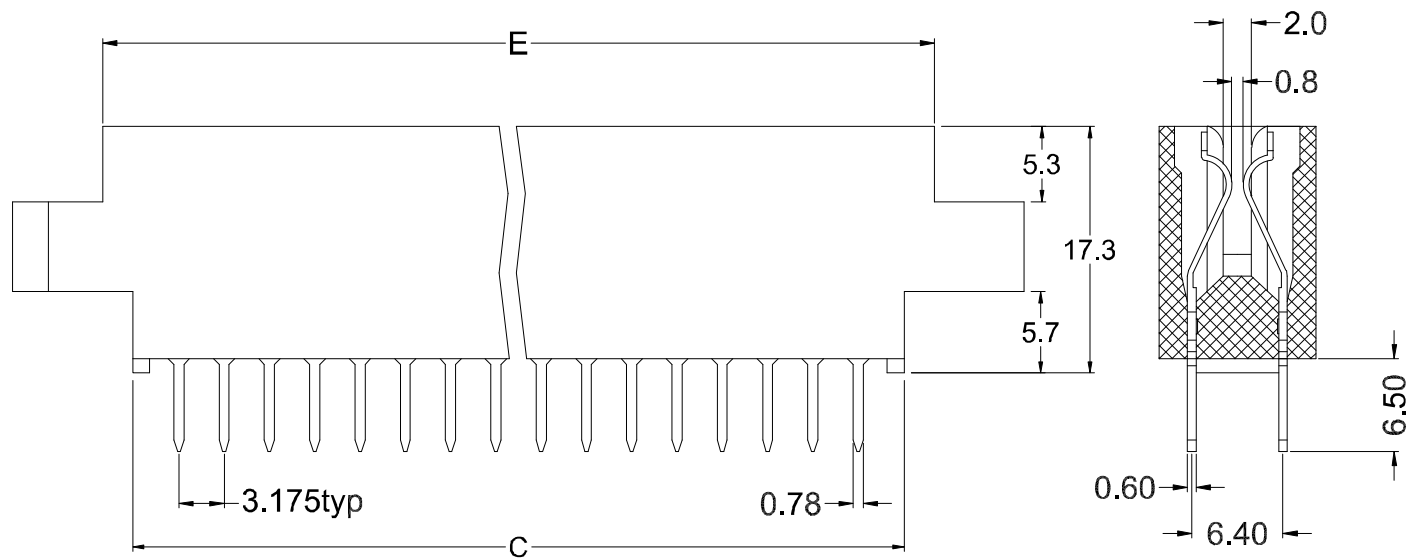


绝缘体 Insulator: Glass filled PBT UL94V-0 ,Black
 接触件 Contacts: Brass or Phosphor Bronze
 电镀层 Plating Contact Gold and Dip Tin over Nickel

电气性能 Electrical Characteristics:
 接触电阻 Contact Resistance: 30mΩmax. at DC 100mA
 绝缘电阻 Insulator Resistance: 1000MΩmin. at 500V DC
 耐压 Withstanding Voltage: 1000V AC/rms 50Hz For 1 minute
 工作电流 Current Rating: 2 AMP
 使用温度范围 Operating Temperature: -55°C~+105°C



Dimension					
Position	A	B	C	D	E
56	109.20	102.20	92.20	85.73	96.60
100	179.05	172.05	162.05	155.58	166.45

PRODUCT 产品名称	EDGE CARD CONNECTOR SOLT-3.175总线插座	GENERAL TOLERANCE x.: ±0.3 x.x: ±0.2 x.xx: ±0.1	DESIGNED 设计	chizon CHIZON(CI XI) ELECTRONIC CO.,LTD. 睿宸(慈溪)电子有限公司		
SERIES NO 序列号	QC910	ANGLE TOLERANCE x.: ±2° x.x: ±1° x.xx: ±0.5°	DRAWING 制图			
CUSTOMER P/N 客户料号	S-3.175-56P	PROJECTION	CHECKED 审核	DRAWING NO.	REV.	0
UNITS 单位	mm	SCALE 比例	APPROVED 核准	G.x.zhang	SHEET	1 OF 1

标记	处数	描述	更改文件号	签字	日期